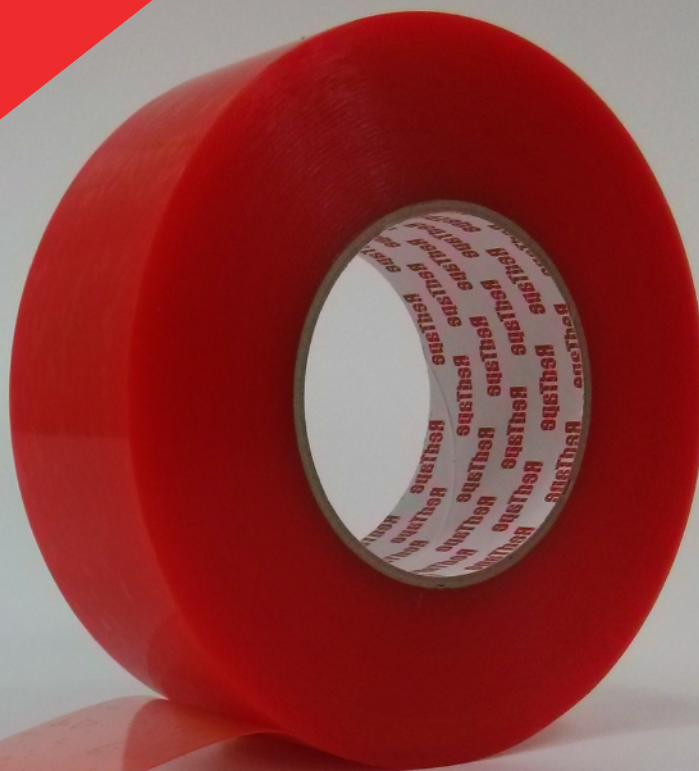


# Redtane



## Double-Sided Adhesive Tapes

A standout solution when an easy to use, quick tack, high shear adhesive tape is needed for bonding to a wide range of substrates. Manufactured with premium polyester or UPVC carriers and coated with pressure sensitive acrylic or rubber adhesives, these tapes are easy to apply and durable.

The benefits include:

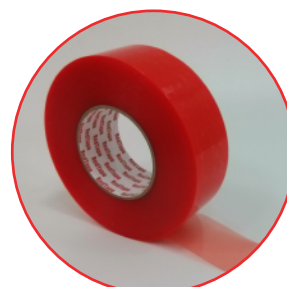
- Resistant to aging, solvent, hot and cold temperature and chemicals
- Adheres to low surface energy substrates
- Plasticizer migration resistance
- Transparency for application convenience
- UL compliant

### Industries

- Converting
- Electronics
- Industrial
- Household
- Furniture

### Application Examples

- Cellphones
- Point-of-Display (POP)
- Foam lamination
- Nameplates
- Core starting
- Extrusion profile backing



Call us to find out available sizes today!

# RealTane



## Double-Sided Foam Tapes

The optimal, cost-effective solution when an indoor and outdoor tape is required. Coated with specially formulated solvent rubber or solvent acrylic adhesives, these tapes can adhere to uneven contact surfaces and withstand wide temperature variations as well as resist weathering and UV for temporary or permanent bonding.

The benefits include:

- Offers high shear strength
- Tack for secure bonding applications
- Allows excellent adhesion to irregular and contoured surfaces

### Industries

- Converting
- Lamination
- Gasket
- Household
- Construction
- Point-of-Display (POP)

### Application Examples

- Window Glazing
- Indoor and outdoor applications
- Point of purchase displays
- Trophies and nameplates
- General Mounting of mirrors, hooks, wire clips, racks, etc.
- Gasketing
- Beauty supply industry e.g. nail file



Call us to find out available sizes today!

# RedTape

## Instructions to Use

1. The application surface must be dry and clean, free from contaminants such as oil, grease, dirt or dust.
2. The surface energy of the application surface should also be considered. For low energy surfaces, primer and pressure should be used to reinforce lamination results.
3. The tape is best to be applied when the air and application surface temperature is above 15 degrees Celsius up to room temperature. Application outside this temperature range is not recommended.
4. The tape should be applied with pressure from one end to the other to avoid air entrapment and smooth lamination. Minimize touching of adhesive during application.
5. For best performance results, the tape should be left to settle into the surface for over 24 hours.
6. If the tape is stored under good conditions such as dry, room temperature and no sunlight, etc, the tape will be good for 2 years.
7. The tape size used should be considered against the application surface and object weight.
8. All information and recommendations are given on the basis of practical experience, but without warranty. It is essential that the users should evaluate the tapes in order to determine the suitability.