

# BADGE MAGNETS



## **MB-SM-33.5-13 (Dual Powered Model with Two Magnets)**

Simply for smaller badges.

Size : 33.5mm x 13mm

Each model has two magnets encased in patented plastic moulding. Supplied complete with a zinc-plated faceplate. Pressure-sensitive, self-adhesive foam tape has been pre-applied to the front side of the faceplate. The liner (which covers the adhesive) has a die-cut tab for easy removal.

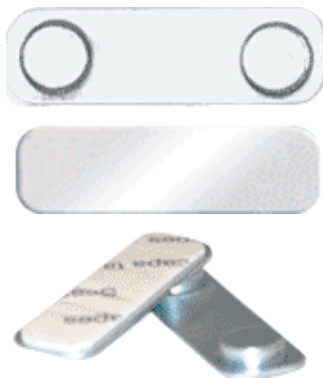


## **MB-LM-43-13 (Dual Standard Model with Two Magnets)**

Ideal for mainly larger nametags and corporate badges.

Size : 43mm x 13mm or 1.69" x 0.51"

Dual powered model has two magnets encased in a patented plastic moulding. Supplied with a zinc-plated faceplate. Pressure-sensitive, self-adhesive foam tape has been pre-applied to the front side of the faceplate. The liner (which covers the adhesive) has die-cut tab for easy removal.



## **MB-MM-43-13 (Dual Magnet Strong)**

This model attracts through thick jerseys and coats.

It has two dual-strength magnets bonded to a mighty metal base-plate.

Both base and faceplates are zinc plated to prevent allergic reaction.

Pressure-sensitive, self-adhesive foam tape has been pre-applied to the front side of the faceplate. The liner (which covers the adhesive) has a die-cut tab for easy removal.